

4

3

2

1

RoHS
REACH
compliant

REVISION DATA

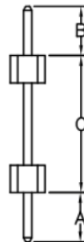
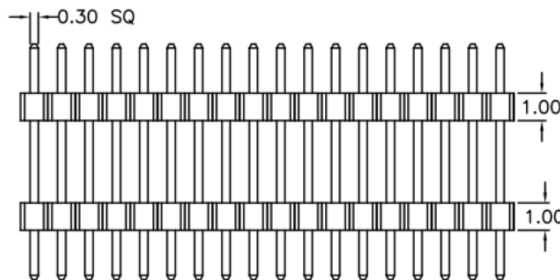
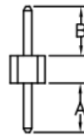
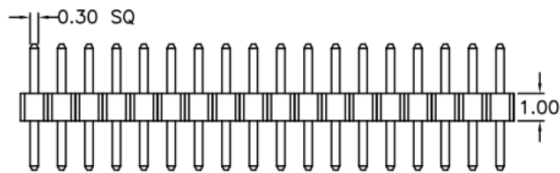
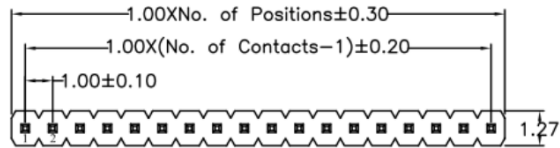
| SYM | REV | DESCRIPTION | DATE | APPR. |
|-----|-----|-------------|----------|-------|
| | 00 | new part | 30.03.17 | MR |
| | | | | |
| | | | | |
| | | | | |

Electrical

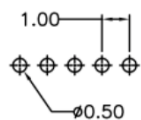
Current rating: 0,75Amps/contact max.
 Contact resistance: $\leq 20\text{m}\Omega/\text{contact}$
 Isolation resistance: $\geq 1000\text{M}\Omega$ at $V=100\text{V}$
 Withstanding Voltage: 300V AC/minute

Material

Contact: Brass
 Isolator: High Temperature, Thermoplastic UL94V-0
 Operating temperature: Gold plated: -55°C to $+105^\circ\text{C}$
 Tin plated: -40°C to $+105^\circ\text{C}$



Recommended
P.C.B Board
Hole Layout



order information

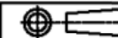
| | | | | | | |
|------------------|----------------|-------------------|----------------|----------------|------------------|----|
| A100101 | xx | xx | xx | xx | xx | xx |
| No. of Positions | Plating Option | No. of Insulators | Packaging | Dimension | Special Customer | |
| 01~50 | 01= gold flash | 1=1pcs | A= bag | A/ B | | |
| | xx= on request | 2=2pcs | xx= on request | A/ B/ C | | |
| | | xx=on request | | xx= on request | | |



BRCONNECTORS

Single Row Pin Header
Straight Type

PROJECTON



general tolerances to DIN ISO 2768-1

DATE

30.03.2017

Customer
Drawing- No.:

DRAWN

MR

Drawing- No.: 2160766

CHECKED

BR

APPROVED

BR

UNIT:
mm

SCALE:

SIZE:
A4

4

3

2

1