

4

3

2

1

RoHS REACH compliant

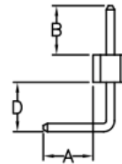
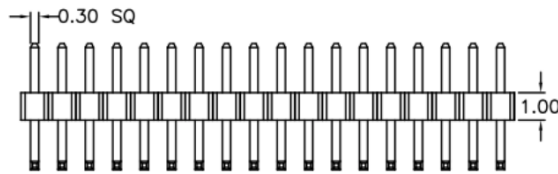
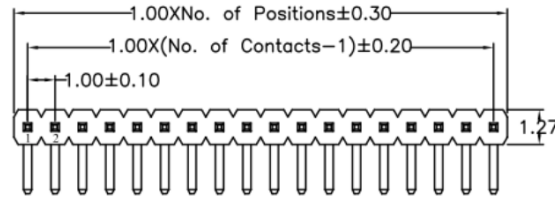
REVISION DATA				
SYM	REV	DESCRIPTION	DATE	APPR.
	00	new part	30.03.17	MR

Electrical

Current rating: 0,75Amps/contact max.
 Contact resistance: $\leq 20m\Omega$ /contact
 Isolation resistance: $\geq 1000M\Omega$ at V=100V
 Withstanding Voltage: 300V AC/minute

Material

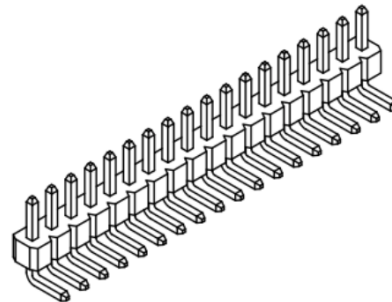
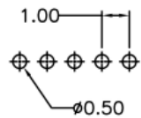
Contact: Brass
 Isolator: High Temperature, Thermoplastic UL94V-0
 Operating temperature: Gold plated: -55°C to +105°C
 Tin plated: -40°C to +105°C



order information

A100121	xx	xx	xx	xx	xx
No. of Positions	Plating Option	Packaging	Dimension	Special Customer	
01~100	01= gold flash xx= on request	A= bag xx= on request	A/ B/ D xx= on request		

Recommended P.C.B Board Hole Layout



		Single Row Pin Header Right Angle Type		
PROJECTON		general tolerances to DIN ISO 2768-1		
DATE	30.03.2017	Customer Drawing- No.:		
DRAWN	MR	Drawing- No.: 2160768		
CHECKED	BR			
APPROVED	BR	UNIT: mm	SCALE:	SIZE: A4