

4

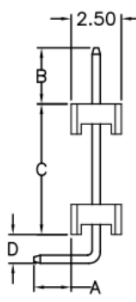
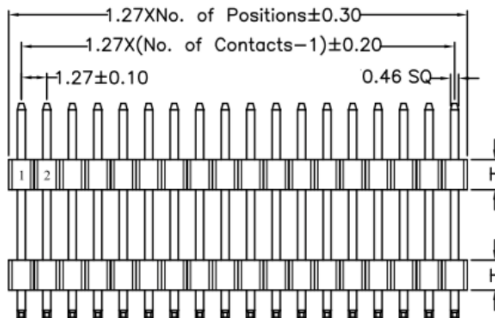
3

2

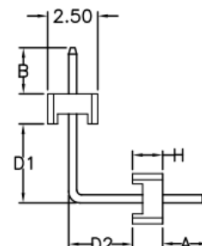
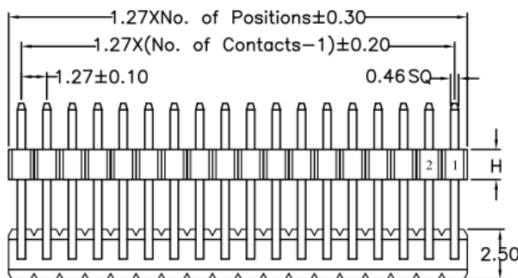
1



REVISION DATA				
SYM	REV	DESCRIPTION	DATE	APPR.
	00	new part	10.03.17	OT



R1 Type



R2 Type

**Electrical**  
**Current rating:** 1Amps/contact max.  
**Contact resistance:** ≤ 20mΩ/contact  
**Isolation resistance:** ≥ 1000MΩ at V=100V  
**Withstanding Voltage:** 300V AC/minute

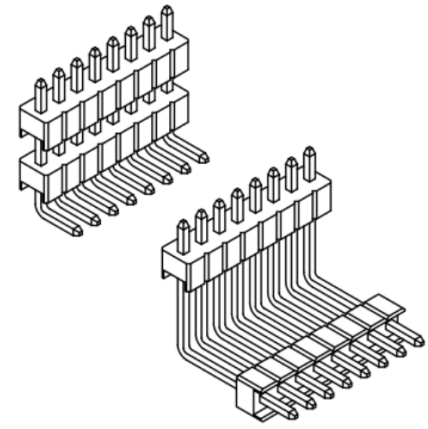
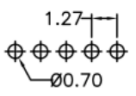
**Material**  
**Contact:** Brass  
**Isolator:** High Temperature, Thermoplastic UL94V-0

**Operating temperature:** Gold plated: -55°C to +105°C  
 Tin plated: -40°C to +105°C

order information

A127129	xx	xx	xx	xx	xx	xx	xx
No. of Positions	Plating Option	Insulator Hight	R Type	Packaging	Dimension	Special Customer	
01~50	01= gold flash xx= on request	10= H= 1.00mm 15= H= 1.50mm 17= H= 1.70mm 20= H= 2.00mm 25= H= 2.50mm xx= on request	R1= R1 Type R2= R2 Type	A= bag xx= on request	A/ B/ C/ D A/ B/ D1/ D2 xx= on request		

Recommended P.C.B Board Hole Layout



	<b>BRCONNECTORS</b>		<b>Single Row Pin Header Right Angle Type</b>			
	PROJECTON					
	DATE	10.03.2017	Customer Drawing-No.:			
	DRAWN	MR	Drawing-No.: 2170183			
	CHECKED	OT				
APPROVED	BR	UNIT:	SCALE:	SIZE:	A4	